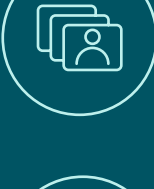


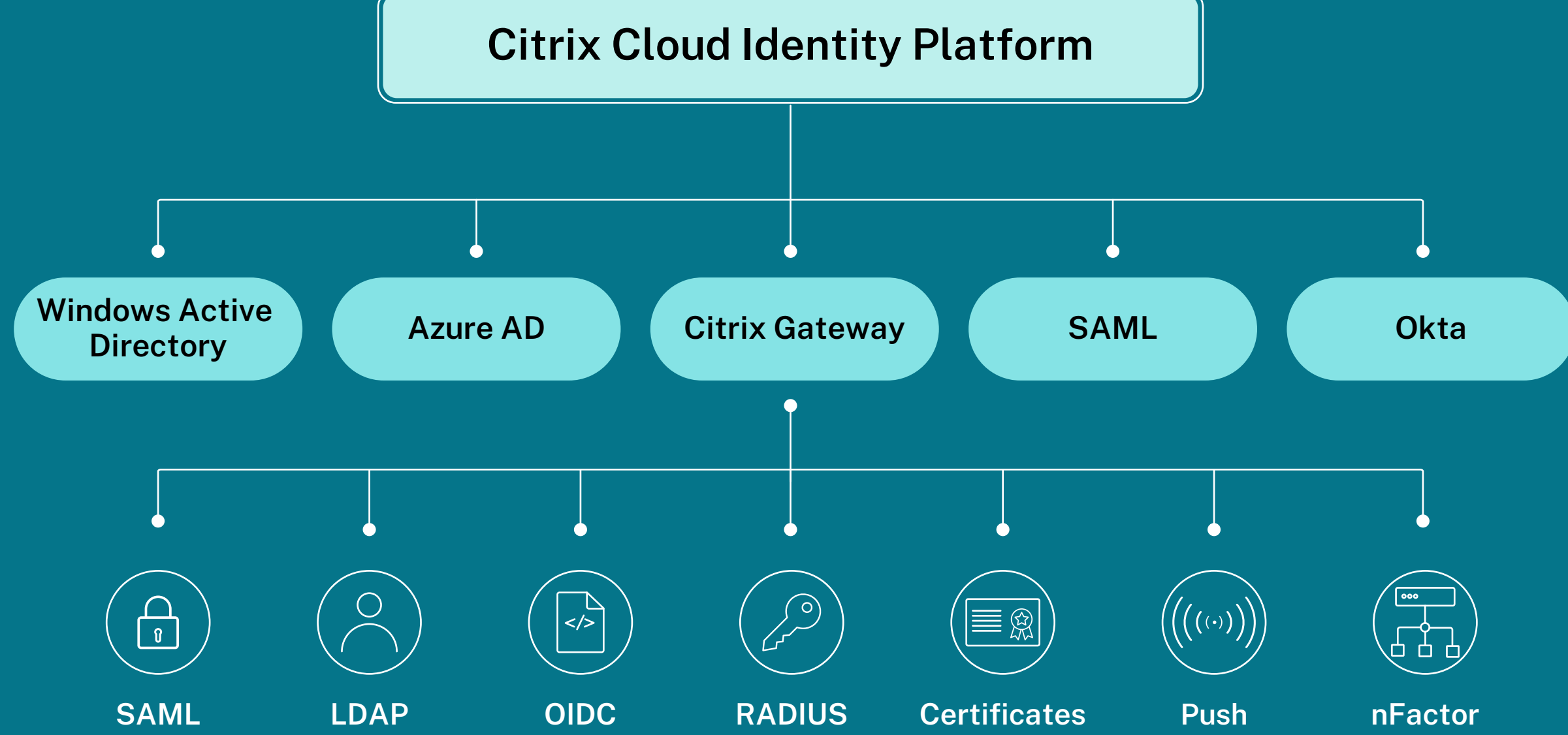


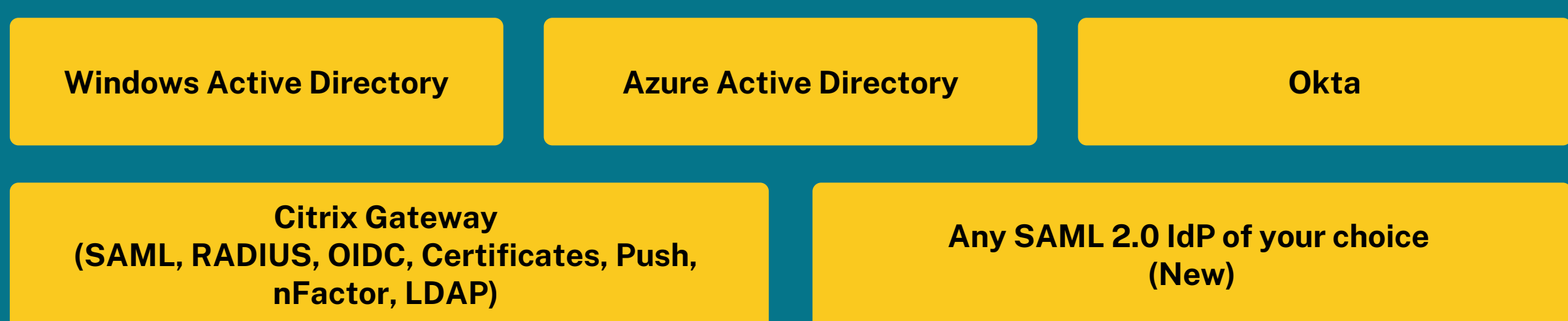
Bring your own identity to Citrix Workspace

Citrix Cloud Identity Platform

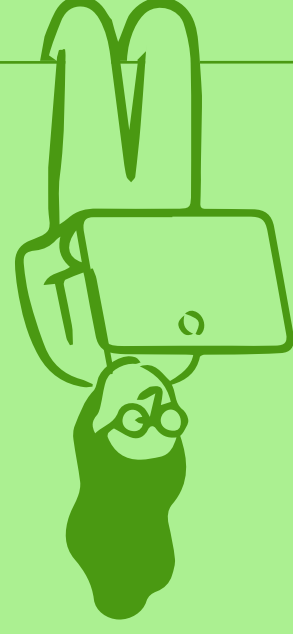
-  The freedom of Identity Provider CHOICE!
-  The flexibility of integration
-  Focus on business and user experience



Citrix Workspace allows each organizations to maintain, retain, and modify their current identity provider and multi-factor authentication policies. Organizations can choose their identity provider from a growing list of options which include

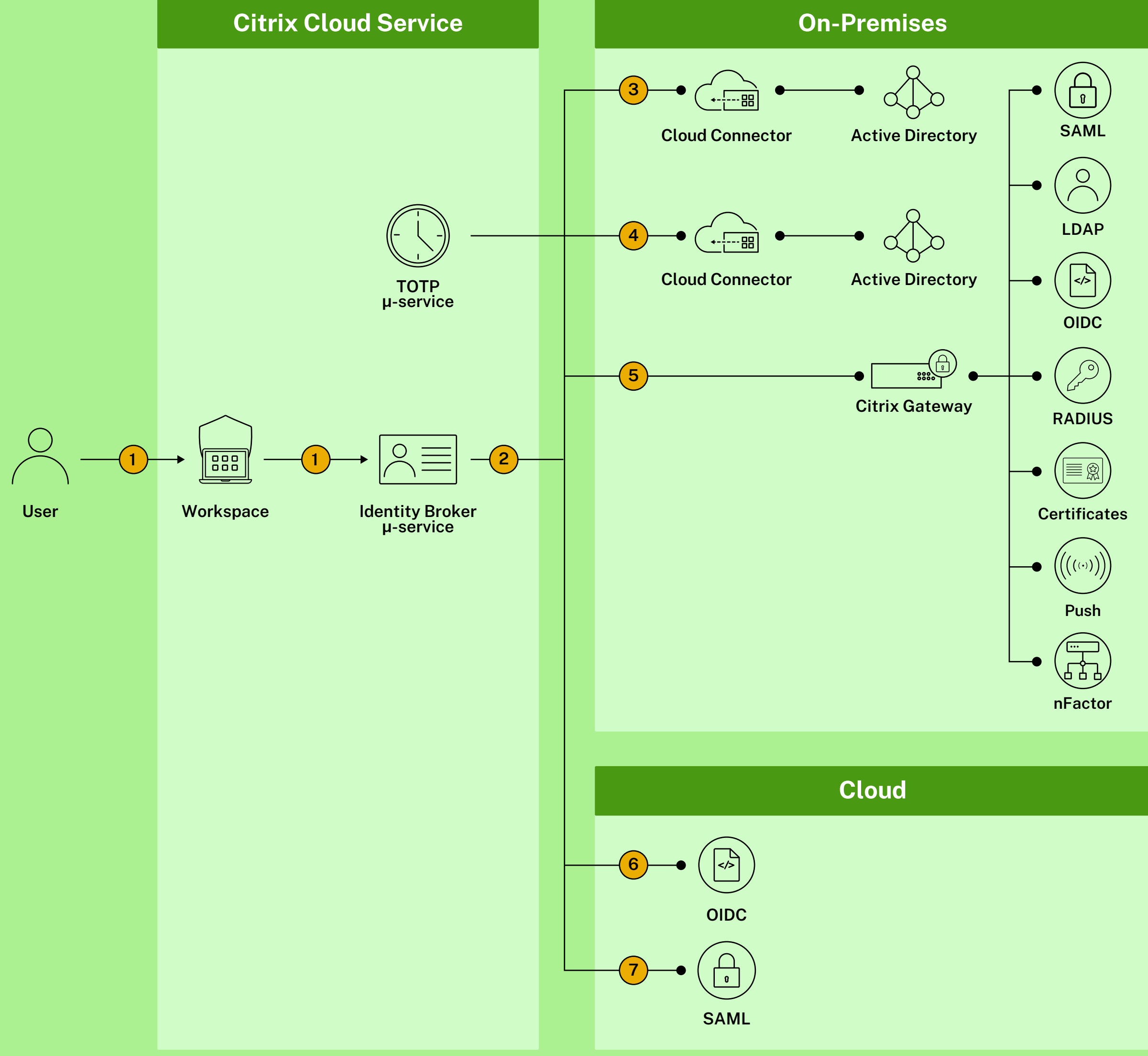


How it works



With Citrix Workspace, organizations have a choice in selecting a primary identity provider used as the single source of identity, authentication and authorization. The identity brokering capabilities within Citrix Workspace allows organizations to maintain, retain, and modify their current identity provider and multi-factor authentication policies without impacting Citrix Workspace access. More detailed information on Citrix Workspace Identity is available in the following Citrix Tech Zone article:

<https://docs.citrix.com/en-us/tech-zone/learn/tech-briefs/workspace-identity.html>



- 1 An unauthenticated user accesses Citrix Workspace, forwarding the request to the identity broker μ-service.
- 2 Based on the configuration of Workspace, the user authenticates with an appropriate identity provider.
- 3 The identity broker μ-service can use the Cloud Connector's communication channel to authenticate users with Active Directory.

- 4 The identity broker μ-service can use the Time-based One-Time Password μ-service to validate the user's temporary token and then uses the Cloud Connector's communication channel to authenticate users to Active Directory.
- 5 The identity broker μ-service can use OpenID Connect to communicate with an on-premises Citrix Gateway, which can build context-aware authentication

- 6 The identity broker μ-service can use OpenID Connect to communicate with cloud-hosted identity providers like Azure Active Directory, Citrix Gateway and Okta.
- 7 The identity broker μ-service can use SAML to communicate directly with cloud-hosted identity providers, which can include Ping and others.

Authentication Options for Citrix Workspace

RADIUS Providers (Through Citrix Gateway)

citrix | Ready.



OpenID Connect (OIDC) Providers

citrix | Ready.

Azure okta Citrix Gateway


SAML Providers

citrix | Ready.



Go Passwordless with FIDO2 Security keys



-  Adaptive Authentication based on user's identity, geo-location and device posture check
-  Role-based access to all users and user personas
-  Single pane of glass administration
-  Work anywhere, access anywhere. On-prem, Cloud, Hybrid.

How you benefit



-  Flexibility to operate anywhere **SECURE EVERYWHERE**
-  Device, network, and tool agnostic IDAM options
-  Avoid expensive and complex IDAM integrations
-  Improve productivity, increase efficiency, and Reduce incidents
-  Improve Transparency, Compliance and Cost-Efficiency

Explore all Identity integrations and more!