

www.smartstation.in
www.smartstationhk.com
www.smartstationuae.com



EXPLORE THE
WORLD OF
THIN CLIENT

THE ULTIMATE THIN CLIENT SOLUTION WITH AMAZING PERFORMANCE ON GREEN TECHNOLOGY REVOLUTION

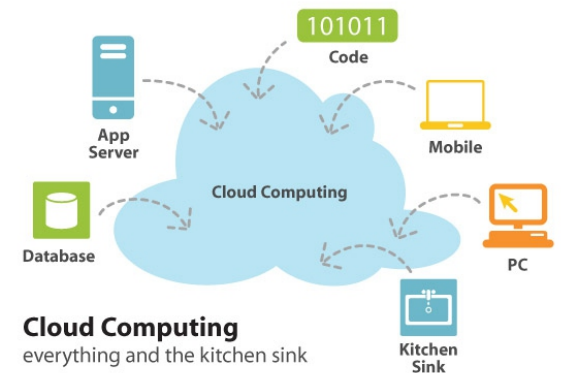
Compared to traditional PC, Thin Client can benefit enterprise users with higher IT management efficiency, productivity and lower IT cost. ACTPL has a complete Thin Client product line for customers, including single display, multi-display and smart card application, moreover, all kinds of Thin Client are durable, quiet and with low power consumption, allowing enterprise users to reduce Total cost of Ownership effectively, Smart Station Thin Client series are available with Smart Linux, Windows CE and Windows Embedded Standard 2009 OS.

The Smart Station Thin Client is the smallest, most advanced thin client on the market. It combines great performance, stateless operation, low power consumption, remote management and simple device setup and imaging. This small, lightweight, solid state unit can be mounted on the back of monitor, making Smart Station Thin Client ideal for any space-constrained environment.

ACTPL is dedicated to be the professional thin client and embedded computing provider for over 14 years and now we are one of the top independent manufacturer of thin client. With providing design, manufacturing and service support functions for embedded computing; ACTPL is your best embedded solution partner to empower more efficiency and safety for your e-World.

Smart 2530 Thin Clients comes with Linux Embedded Operating System with protocols like RDP 7.0, Citrix Certified HDX Ready, VM Ware VDI Client with RDP & PCOIP Support, it also comes with SEP USB redirection printing support and Multimedia Redirection, also provide support for USB Block / Allow in RDP Session, can support with 32 bit graphics. Having tool to identify network functionality. Font smoothing and Desktop Background is also supported. It can support Server Operating system Microsoft 2003, 2008, 2012, Desktop Operating System like Microsoft Windows XP, Windows 7, and Windows 8. It also supports Linux Environment with XRDP.

Smart 2530 are best suitable for Education, University, Small & Medium Scale Industries, SOHO, Hospitals, Chartered Accountants, and Traders.



Introduction



very low
cost



easy to
manage



ultra low power
consumption



stable &
reliable



better
performance



fanless
design

Smart Station Thin Client Benefits

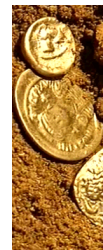


Green

Lower power consumption for energy saving and reduce CO2 for earth saving.

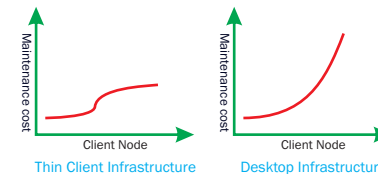
Our products focus on reducing, reusing and recycling materials used in our manufacturing operations.

Our environment compliance effort including ISO 9001:2008 Certification.



Economy

Lower power cost of ownership (TCO): Save more than 50% off cost than using traditional desktops for energy saving and maintenance cost saving.



Durable

Fanless design for long life span, noise free and higher system reliability. Our thin client components are used industrial level and solid parts for long lifespan.



Secure

Since the software becomes entirely confined to the servers, thin clients are protected from the use of unauthorized software or the introduction of viruses. Unlike PCs and traditional laptops, thin clients are locked down and offer greater security against theft, damage, malware, spyware and viruses.

Secure



Eco Friendly



Power Saver



Maintenance Free



Benefits

SMART CCCM Centralized Management

CCCM (Cinfin Cloud Client Management Software) supports multi-platform, multi-OS-type. Contains functions such as remote assistance, batch deployment, software dispatch, application upgrade etc. With unified management interface, to achieve centralized management and group management.

Unified management interface, adapt to centralized management and group management.

Provides unified management interface, user account, roles (administrator privileges), resources (cloud client) separated, to achieve centralized management and group management.

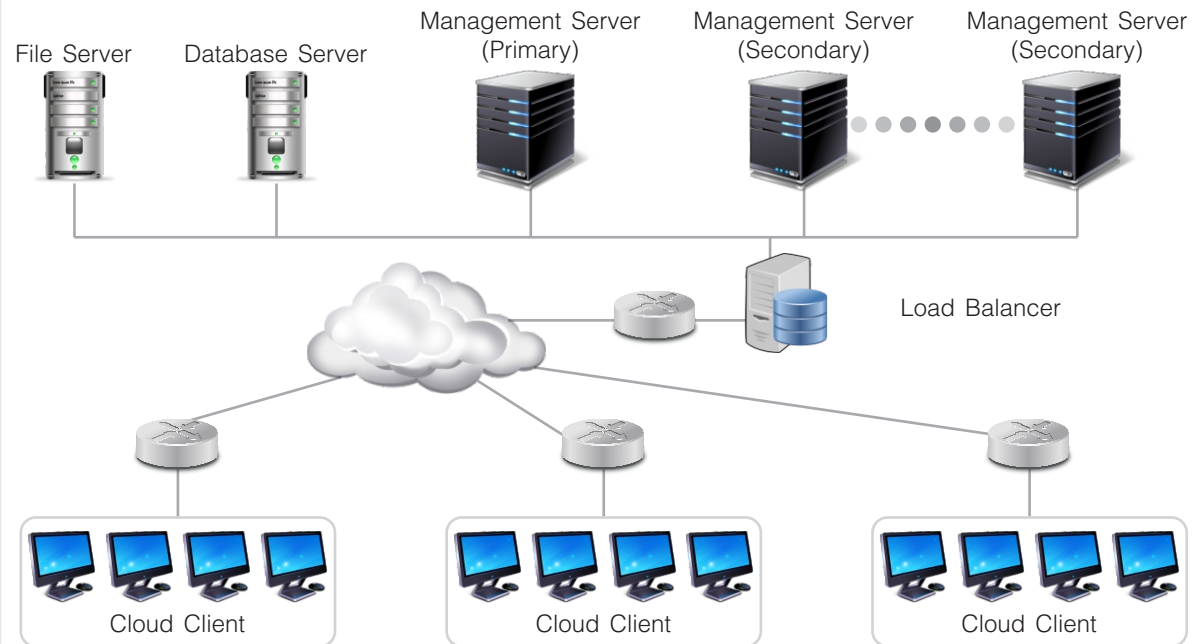
Standard protocol, fully management

The solution can manage various cloud clients with different OS (XP/VES7/COS*). The solution defined a standard communication interface, which is convenient to manage cross-platform device.

Excellent user experience

While support instant upgrade, also support automatic upgrade while cloud client shutting down or Non-working time, ensure user not be interrupted while working.

network topology map



Note : Less than 3,000 units under management, no need to install Load Balancer and Secondary Management Server.

Management

SMART CCCM Centralized Management Functions

Function Item	Function description
System configuration	Remotely system configuration and software configuration could be set remotely, the common system configurations contain Display, Date and Time, System User, Network, Browser, Printer, Connection Item and other software configuration and template could be applied as well as application configuration could be set in batch.
Remote Assist	Issues could be solved by remote analysis ways : Remote monitoring, Screen shot, Instant Messaging etc.
Power Management	"Turn Off", Log Off", "Restart", "Wake up", could be done remotely and intelligently.
Message Management	Notification or message could be sent from administrator to single cloud client or batch cloud client, and messages could be done instantly between client and server (windows).
File Deployment	Application installation package could be dispatched fastly and installed safely, and you can copy file to client, deploy operating system or upgrade patch.
Log Management	Record the time, content and result of the operation by administrator. It is convenient for administrator to track in the future.
Device Security	Disable or enable peripherals.

Management

smart 2530



Processor	CPU	ARM Cortex A9 1.0 GHZ
Memory	RAM	512MB DDR3
Storage	EMMC	4G
I/O Peripheral Support	VGA	x1 (optional HDMI port)
	USB 2.0	x4
Networking	LAN	x1 (10/100Mbps SMSC LAN8720A-CP-TR)
	Wireless	(optional) Built-in Support 802 11b/g/n protocol
Display Support	Resolution	VGA up to 1920x1200@60Hz
Audio	Line-out	-Output x 1 (line-out)
	Mic-in	-Input x1 (line-in/microphone)
Physical Characteristics	Dimension	93.5mm(L) x 93.5mm(W) x 20.4mm(H)
	Weight	0.2Kg
Power	Adapter	5V,3A
	Consumption	3.3W
Environment	Operation Temperature	0 C - 40 C
	Relative Humidity	30% to 90% non-condensing
Electrical Values	voltage range	100 V - 240 V (AC Input)
	frequency range	50 Hz - 60 Hz
SMART COS		MS RDP Citrix XenApp / Xendesktop X11(XDMCP) VMware view client resident Firefox browser, VNC viewer, Desktop / kiosk support / SPICE client Sun Java support. CUPS Print support for Local printer (e.g. Deskjet and Laserjet)
VDI support		Microsoft windows Terminal Server 2003, 2008 & 2012 Citrix XenApp / Citrix XenDesktop / VDI-in-a-Box VMware / REDHAT virtualization
Set-up and configuration		Boot from local Flash
		User interface language U.S English Keyboard Language support U S English Standard German French Italian and 30 Others included
Management		Remote management configuration and upgrade through CCCM power control, remote configuration, remote monitoring, system/patch deployment, security management, etc.



Specifications

[Home](#)[Introduction](#)[Benefits](#)[Management](#)[Comparision](#)[Contact](#)www.smartstation.in

smart 2530



	Smart 2350	Smart 2510	Smart 2530	Smart 2570	Smart 2590	Smart 7100	Smart 9150
Processor	ARM A9 1.0 GHZ	MARVEL 800 MHz	ARM A9 1.0 GHZ	AMD FUSION 1.0GHz	AMD FUSION 1.0 GHz DC	INTEL 2550 1.86 GHz DC	INTEL 2550 1.86 GHz DC
RAM	1 GB	256 MB	512 MB	1 GB	2 GB	2 GB	2 GB
DOM	4 GB	256 MB	4 GB	8 GB	8 GB	8 GB	8 GB
Parallel Ports	NO	NO	NO	NO	NO	YES	YES
Serial Port	1 SERIAL PORT	1 SERIAL PORT	NO	NO	NO	YES	YES
USB	5 USB	3 USB	4 USB	6 USB	7 USB	6 USB	6 USB
KBD/Mouse Ports	USB	USB	USB	USB	USB	PS2	PS2
Embedded O/S	LINUX	LINUX	LINUX	LINUX / WINDOWS	LINUX / WINDOWS	LINUX / WINDOWS	LINUX / WINDOWS
Wired/Wireless	WIRED/WIRELESS	WIRED	WIRED/WIRELESS	WIRED / WIRELESS	WIRED / WIRELESS	WIRED / WIRELESS	WIRED/WIRELESS
Ethernet	10/100/1000 MBPS	10/100 MBPS	10/100 MBPS	10/100 /1000 MBPS	10/100/1000 MBPS	10/100/1000 MBPS	10/100/1000 MBPS
Power Supply	EXTERNAL 15 W	EXTERNAL 15 W	EXTERNAL 15 W	EXTERNAL 36 W	EXTERNAL 36 W	INTERNAL 120 W	EXTERNAL 60 W
Power Consumption	6 Watts	5 Watts	3.3 Watts	14.5 Watts	14.5 Watts	25 Watts	25 Watts
Dimension (in MM)	156x130x37	156x130x37	93.5x93.5x20.41	156x130x37	165x132x30	305x230x60	215x190x60
Warranty	3 Years	3 Years	3 Years	3 Years	3 Years	3 Years	3 Years
Vesa Mounting	YES	YES	YES	YES	YES	NO	YES

Comparison

[Home](#)
[Introduction](#)
[Benefits](#)
[Management](#)
[Specifications](#)
[Contact](#)
www.smartstation.in

Apurva Computers Technologies Pvt. Ltd.



SURENDRANAGAR

2nd Floor, Manivir Complex,
Vitthal Press Road,
Surendranagar-363001,
Gujarat, INDIA.

Cell. +91 982 420 8213
+91 937 465 1621

sales@smartsation.in

AHMEDABAD

202, Manas Complex,
Opp. Star India Bazar,
Satellite Road, Ahmedabad-380015,
Gujarat, INDIA

Cell. +91 982 420 8213
+91 937 465 1621

sales@smartsation.in



DUBAI

P.O.Box 41707,
Dubai.
UAE.

Cell. +971 555 88 2627

sales@smartsationuae.com



HONGKONG

Unit 04, 7/F, Bright Way Tower,
No. 33, Mong Kok Road,
Kowloon, Hongkong,

Cell. +86 1371 4623 640

sales@smartsationhk.com



©2014 The SMARTSTATION logo and references are trademarks of SMARTSTATION. Other product names mentioned herein are for identification purposes only and may be trademarks and/or registered trademarks of their respective companies. All specifications are subject to change without notice. Whilst we make every effort to ensure the accuracy of the details, specifications, models, images and benefits featured in this datasheet, we cannot be held responsible for any errors and/or omissions. If you have any queries regarding SMARTSTATION products. Some features require support by server operating system and protocol.

Contact

[Home](#)[Introduction](#)[Benefits](#)[Management](#)[Specifications](#)[Comparision](#)

www.smartstation.in