

# Speed when you Need – On-Demand GPU Acceleration

Stay flexible and agile with the AMD-Citrix-Microsoft Azure® collaboration. Partition your GPU for on-demand allocation to Citrix Virtual Desktops with no additional license costs.



## Get that boost of power, now on-demand, and on Azure

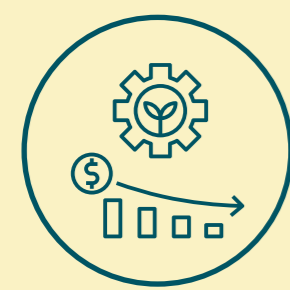
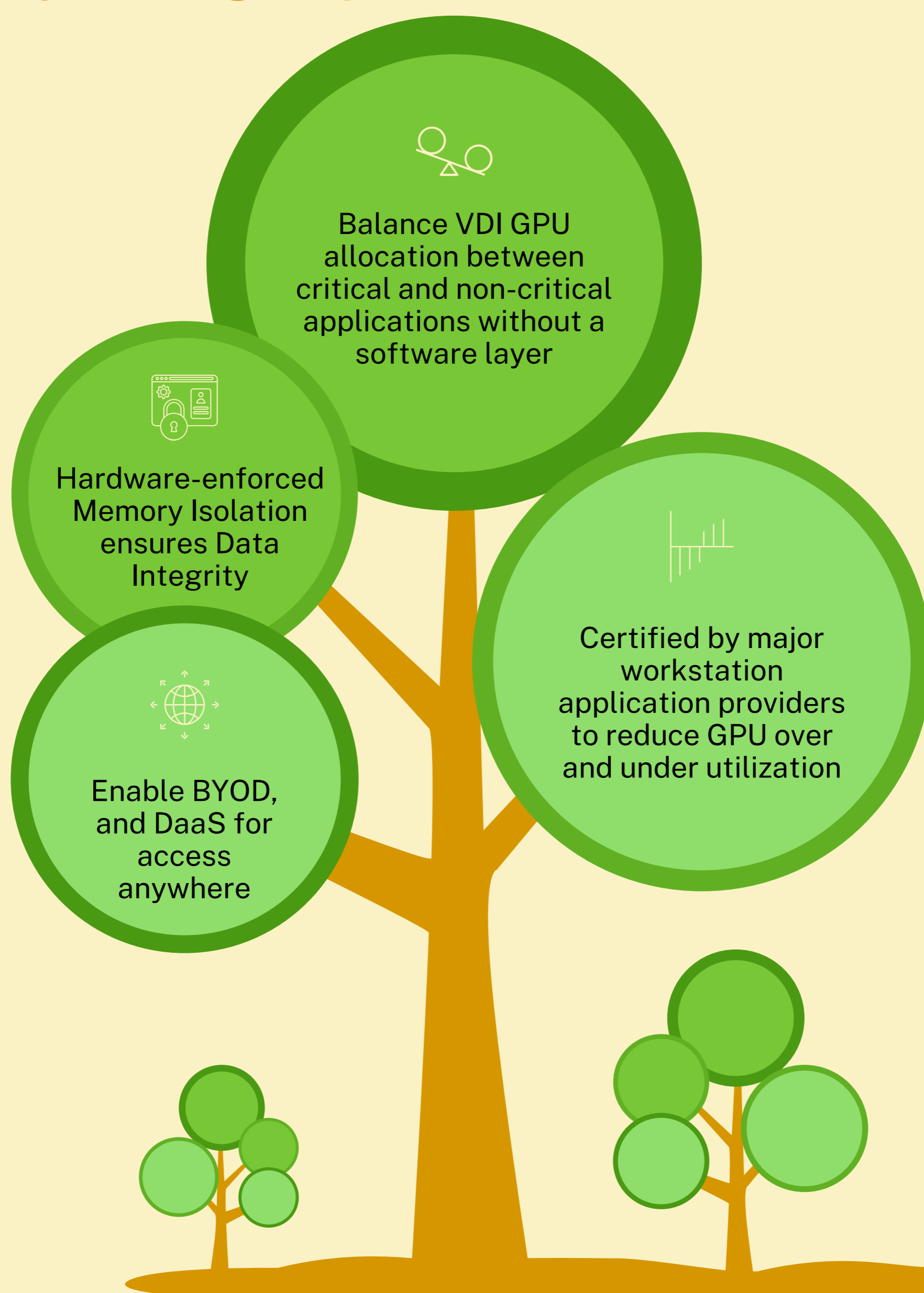
The NVv4 brings GPU-partitioning for the first time on Microsoft Azure®. Citrix Virtual Desktops customers can benefit through maximum utilization and zero overload by seamlessly allocating GPU resources to the systems that need it most.

**Do more. With Less. Using Citrix HDX 3DPro's GPU acceleration and AMD's flexible GPU partitioning on Microsoft Azure NvV4 virtual machines. Save cost, improve productivity. Reduce, Reuse, and Recycle available GPU for efficient utilization across the enterprise.**

From full GPU to 1/8 GPU scaling is at your fingertips



## Lego-like simplified GPU provisioning – Now at your fingertips

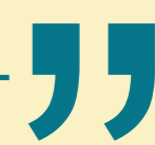


## Lower cost sans compromise



“As a long time user of Citrix, who have a long-standing collaborative relationship with Microsoft, it was a natural choice to go with Microsoft Azure which meant that TBI could deploy Microsoft Azure resources seamlessly with their existing Citrix Cloud Services.

The decision to go with the AMD CPU and GPU-accelerated Azure NVv4 instances was, as Wolbertus explains, for “a typical Dutch reason”. “It was cheaper and it performed the same as before,” he says, adding that TBI currently uses the Standard\_NV8as\_v4 instance in Azure for its BIM workloads. This is made possible by AMD’s innovative SR-IOV-based, GPU partitioning technology and Microsoft’s GPU-P technology, and allows the GPU resource into be split into different increments along with the CPU cores, memory and storage.



**Frank Wolbertus**  
BIM solution specialist  
TBI SSC-ICT



## In a nutshell, it's Flexibility as a Service



Hardware-based virtualization allows predictable quality of service, and a simplified, yet improved approach to virtualization



Balances quality at scale and cost efficiency eliminating software layers and additional tools



Enables enterprises to rollout Work From Home friendly features such as bring your own device (BYOD), and Desktop as a Service (DaaS)



For more information, visit

[Citrix Ready Marketplace](#)