

MINI PCs

ultraFLEX Nano PC

The perfect mini PC for KVM solutions



WHY WEYTEC

COMPACT & EFFICIENT

The most compact and energy efficient professional mini PC

The ultraFLEX Nano PC is a highly energy efficient mini PC designed for 24/7 operations. Despite being the smallest model in the ultraFLEX product line, the ultraFLEX Nano PC provides maximum processing power with modest power consumption and minimal heat emissions. Two Gigabit Ethernet ports and (optional) redundant power supplies increase system reliability.

- Green IT
- Extremely low noise and heat emissions
- Supports up to two screens and 4K resolutions
- Dual Gigabit Ethernet ports
- Redundant power supplies (optional)
- Standalone or in 19" chassis

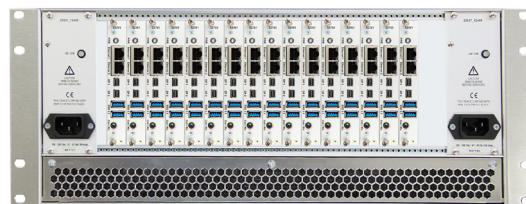
Installation

The ultraFLEX Nano PC has a tiny footprint and is extremely space-saving. It can be installed directly at the workplace or in a system room.

**ultraFLEX Nano PC in a
2 Slot Box incl. KVM Transmitter**



**Up to 16 ultraFLEX Nano PCs in one
16 Slot Chassis 19" 4U**







WHY WEYTEC

PERFECT INTEGRATION

and easy cabling with other WEYTEC components in the same chassis.

Available products

Intel Atom		
Product No.	32761B102	32761B208
		
Core Processor	X5-E3930 	X7-E3950 
Screens		
RAM	2 GB	8 GB
SSD	250 GB	